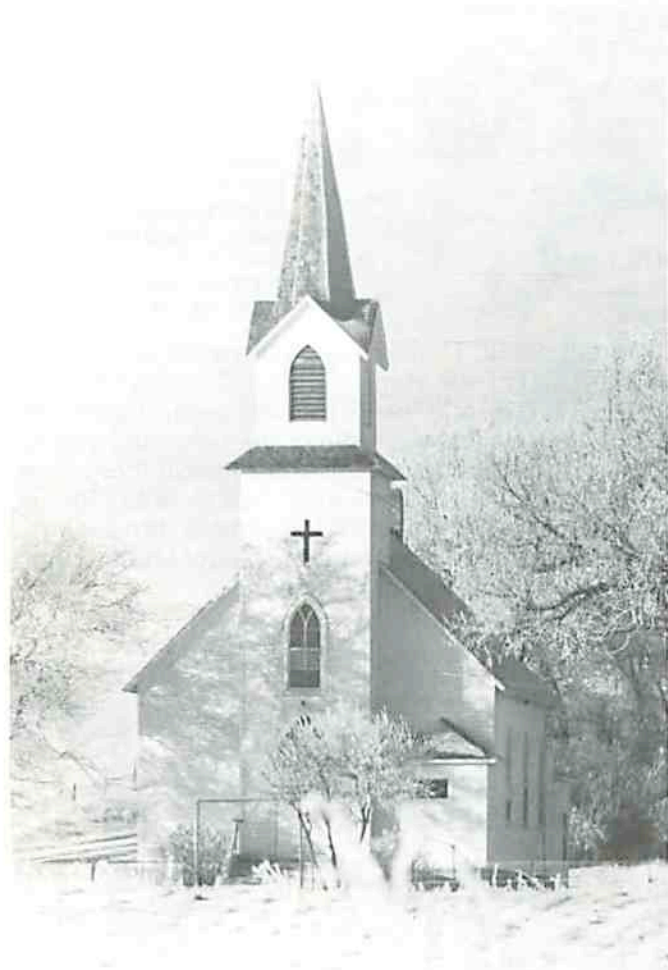


CHURCHES & ORGANIZATIONS

SIMS LUTHERAN CHURCH



"It was an era of prosperity in America. Business and industry had recovered from the financial collapse of 1873 during which the Northern Pacific Railroad had been obliged to suspend construction work on its tracks at Bismarck. But by October 21, 1882 the railroad bridge joining Mandan and Bismarck had been completed and was opened on that date. In 1883 the first train traveled over this northern route to the Pacific seaboard. In Sims H. T. Bly's mine was supplying the locomotives of the road with coal."

(Mandan Daily Pioneer—Dec. 11, 1959)

At that time the mines at Sims employed upwards of 175 men, and the brick factory workers numbered about 200. The miners and brick factory laborers had established homes in the area, but the developing community had no resident minister. The Swedish Lutheran Church of Bismarck helped by sending two of its ministers out to conduct services two or three times a year, namely a Rev. Carlson and Rev. Cavalein.

In 1879 the Northern Pacific surveyed and laid out the townsite of Sims. That same year a young Nor-

wegian was ordained in the Trinity Lutheran Church at Rushford, MN, a Rev. Ole J. Norby. Rev. Norby then went to Yankton and Turner counties in southern Dakota Territory to begin his ministry. It was in 1884, at 29 years of age, that Rev. Norby visited the Sims community for the first time. This visit convinced him that a church would be successful. He returned to the East, however, after meeting (on Sept. 30) with those interested in organizing a congregation. These pioneers laid the foundation for the congregation at that time.

CHARTER MEMBERS

Ole Reinersten Feland	Jacob Bernetsen	Theodor Ramslund
Reinert Gabrielson	Theodor Samuelson	Aanen Johnson
Carl Knudsen Midboi	Olaus Hanson	Berthe Treeland
Marie Treeland	Adrienne Johnson	Bolette Ostreng
Nicolai Ostreng	Sakarias Egen	Tobias Larson
B.T. Ramslund	Mathias Hanson	Sine Ramslund
Christian Thomsen	Jacob Olsen	Surine Thomsen
Carl P. Andersen	Lars Wang	Caroline Andersen
Ingeborg Wang	Elias Larson	Amund Pedersen
Staaale Sakarisen	Maria Larsen	Christin Pedersen
Tobias Samuelson Aas	Gabriel Petersen	Tomine Johnson
Ole Wettestad	Staaale Johnson	Hans Pedersen
Elizabeth Johnson	Hans Paulsen	Arijan J. Johnson
Ole Narvig	Jacob Bernetsen	Daniel Danielsen
Ricard Olson	Berndt Sellius Olson	Anders P. Neilsen
Theodor Feland	A. Amdal	John Olin
Abraham Elias Olson	Svend Johnson	

While Rev. Norby was back East, the newly organized group began building the two-story parsonage which served as a home for the minister and a place of worship for the community. The first worship services were conducted on the second floor of the brick structure, located on land donated by B.T. Ramslund in the Terre Cotte addition and paid for by donations from the residents. Rev. O.J. Norby accepted the call of the community and moved to Sims in 1885, at which time he finalized the organization of the congregation. The Augustana Synod's Constitution had been the guideline for the congregation which chose the name, Scandinavian Evangelical Lutheran Congregation of Sims. The Hauge's Psalm Book was chosen for use by the church members. The minister's territory extended over the northern half of the state, close to the Canadian border and west to Montana. In 1893 Rev. Norby accepted a call to Wisconsin and shortly thereafter Rev. T.K. Gaustad became the minister. He immediately began planning for a new church structure. Rev. Gaustad was credited with the successful financing of the building. Mrs. Gaustad and the ladies of the church held little parties, food sales, and programs to help raise funds for the new church building. The congregation purchased an abandoned building in downtown Sims and with the salvaged material from this torn-down building they built the frame for the now-standing

structure. Work progressed slowly. The members worked when they had time and money to buy supplies, piecemeal style. Before the building was completed, a "cyclone" struck and leveled the building. Taking hardships in stride, the settlers rebuilt the church, having its dedication in 1900. Because there was no furniture in the church, Rick Olson brought a stock trough to church to be used for a kneeler when Holy Communion was held.

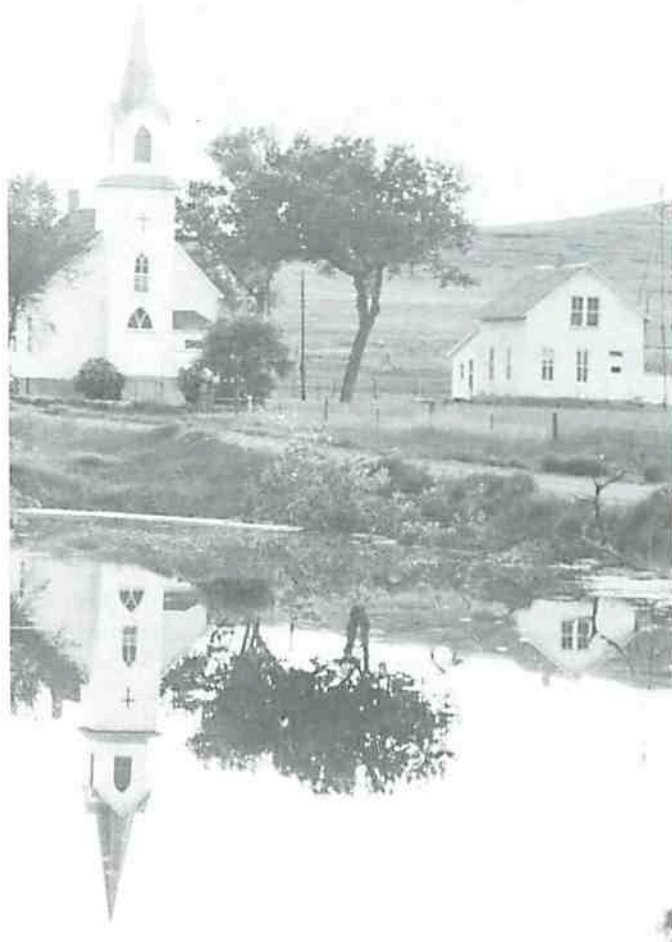
The pioneer women of the Sims Ladies' Aid worked to help fund the structure. Not only did they help pay for the building itself, but they also purchased a pulpit, altar, organ, and divided the upstairs of the parsonage into three rooms. Pews were purchased in 1903, as well as the bell with a Norwegian inscription on its surface. The church was lifted and a basement dug underneath in 1915. The "pike forening" helped to raise money for this project. The altar painting based on Math. 14: 22-34 was painted by P. Holmboe - 1905 - from a picture by Pluckhorst. Nicolai Ostreng made the baptismal font, handcarving the design on the wooden structure to match the altar and pulpit, rubbing carbonized wooden matches into the wet, white paint, resulting in a marble-look finished product. The hymn board was purchased for the church by the Sunshine Club, a group of young girls who made and sold handwork. The frosted window glass was donated to the church by Mrs. Oscar Olin and sons in 1944.

Rev. G.N. Isolany accepted a call to serve the Sims congregation replacing Rev. Gaustad who had left the year before. While Isolany served the church, the Ladies' Aid held ice cream socials on Sunday afternoons and weekday evenings to help fund the church. The Aid also held a "sale and supper" in the fall for church and mission support. This sale and supper consisted of a feast followed by an auction of the donated handwork from all members of the church.

The church was first heated by a coal stove that stood in the front of the church, later by a coal furnace and now a propane furnace. Many cold Sunday mornings a designated church member would walk, ride horseback or drive a team to the church to start the fire and heat the church before worship services.

Kerosene lamps were the first type of lighting to be used. There were two chandeliers extending from the ceiling with six lamps placed in a circle on each. Gas lamps were the next form of lighting, followed by a windcharger built by Rev. C.O. Brecto. When the electric lines reached the area in 1950, electricity then became the mode of lighting.

The ministers that served Sims served other points also. While Rev. Norby was at Sims he organized the Mandan Lutheran Church and traveled to Taylor to minister. After the congregation organized at Almont in 1915, the two parishes maintained a pastor together. These pastors have served the Sims parish: Rev. O.J. Norby, 1884-1893; Rev. T.K. Gaustad, 1893-1906; Rev. G.N. Isolany, 1907-1912; Rev. L.A. Breen, 1912-1916; Rev. L.D. Dordal, 1916-1918; Rev. H.D. Halvorson, 1918-1919; Rev. T.H. Larson, 1920-1923; Rev. J. Thornell, 1924-1928; Rev. I.G. Monson, 1928-1930; Rev. Lars Foss, 1930-1931; Rev. Carl G. Nelson, 1931-1936; Rev. R.P. Haakenson, 1936-1937; Rev. C.O. Brecto, 1938-1943; Rev. C.J. Fylling, 1943-1953; Rev. N. Jolivette, 1953-1956;



Rev. O.L. Olsrud, 1957-1966; Rev. Leo Anderson, 1968-1969; Richard Durkop, 1969-1971; Rev. Douglas Brandt 1971-1975, and Rev. John Leitel, 1975-----.

The first officers in the Sims congregation were Staale Johnson, Christ Thomsen, B. Ramsland, A.J. Johnson, Amund Pedersen, Aanen Johnson, Tobias Larson, N. Ostreng, Svend Johnson, Sakarias Egen, Mathias Hanson and Jacob Olson.

The first baptisms in the congregation were Andrew Sims and Anna Petrina Johnson, Oct. 20, 1884. The first couple married were John Olin and Tobine Jacobson, Oct. 19, 1884. The first one confirmed was Anna Tobine Thomson, Oct. 10, 1887. And Ole Ramsland and Dena Ramsland were the first confirmed in the present church edifice.

The Sims church building has been a landmark on the Dakota prairie from the building of the railroad and the settling of the prairie by the pioneers on through the removal of the railroad and up to this nuclear age. This church is a symbol of a prairie heritage and our prairie roots.

The present day Harvest Festival and Blanket Drive has replaced the sale and supper as a means of church and mission support.

The 1981 Sims Church Officers are: Joel Johnson, president; Jake Larson, vice president; Jeanette Anderson, secretary; Willard Johnson, treasurer; Deacons are Larvel Anderson and Richard Severson, with Lorna Bender, the deaconess; Trustees are Ray Olin, Milton Johnson and Karen Severson.



Sims congregation - 1980

SIMS CHOIR

The first choir started about 1895 with Pete Peterson directing. Mr. Peterson led the singing and choir for years, accompanying the singing with his violin before the congregation had an organ. When Rev. Brecto came in 1937, he conducted the choir. For several years Almont and Sims had a joint choir with Mrs. Robert Atkinson as director. In 1955 the choir was divided and Caroline Larson became the director of the Sims choir. A girls' chorus was directed for a time by Mrs. Duane Johnson with Mrs. Thorvald Larson as accompanist. The men's chorus of the Sims/Almont parish has provided music for special occasions.

changed to a date before Christmas. The present Sunday School has furnished special music for the worship services and the residents of the Elm Crest Manor Retirement Home of New Salem. During the late 60's and early 70's it was not uncommon for the Sunday School to practice many hours for a Christmas or Easter program. During this time the group would practice an hour or more, then take a football break for a half hour, and finally practice another hour before the evening was over.

Carol, Mrs. Ray Olin, is the present Sunday School superintendent. Sunday School is held every Sunday and the Sunday School is still furnishing special music for special occasions.

SIMS SUNDAY SCHOOL

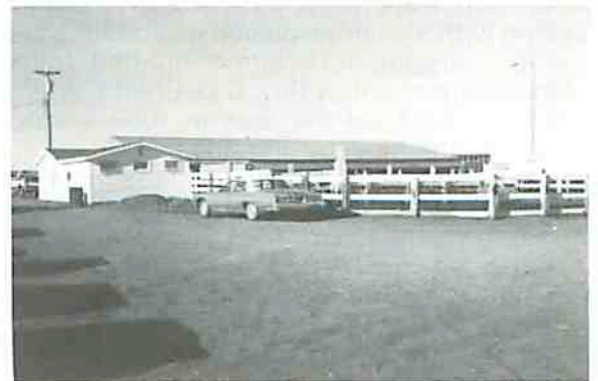


The Sims Sunday School was organized in 1885 by the Rev. O.J. Norby and was continued, with some periods of interruption, until 1955 at which time it was more convenient for the children to attend the Almont Sunday School.

The first teachers were Mrs. Underdahl, Pete Peterson, Rick Olson and Jonas Ims. Mrs. Thorvald Larson and Willard Johnson have served as superintendents through the years. The present Sims Sunday School was reorganized by LoAnn Leach and Rev. O.L. Olsrud in 1964, with LoAnn serving as superintendent for the next ten years.

The Sunday School had regularly held a Christmas program December 26, but in the late 60's it was

Thank you for doing
business with us and
hope you will continue
in the future.



**New Salem
Weighing Station**

SIMS LADIES AID

The Sims Ladies Aid was organized in 1883 by the women of the Sims Evangelical Scandinavian Lutheran Church.

The first officers were Mrs. Pete Anderson, Mrs. Jacob Olson and Mrs. A.J. Johnson.

The church women worked hard in church work to be inspired by the word of God and to pray for guidance in their work. These meetings also provided some needed companionship with their fellow neighbors. They endured the travail of traveling long distances to attend these meetings, most going with horses and sometimes walking, taking their children with them. These meetings provided a means of hearing more of God's word and singing hymns of praise to Him. They had annual church suppers and fancywork sales that helped defray the indebtedness incurred in providing for the church.

In 1909 the ladies from the Curlew area formed another branch of the Sims Aid. This alleviated the problem of extended transportation. Mrs. Jacob Olson was the first president; Mrs. Rickart Olson the first secretary-treasurer. Their annual meetings were held jointly with the Sims Ladies Aid until 1921 when the Curlew Aid held its annual meeting at the Benson school.

In 1944 the general federation of the church voted to simplify the work of many departments under five heads; namely, missions, education, charity, life membership and in memoriam.


In 1955 the two Ladies Aids merged as most women could provide for their own transportation to and from the monthly meetings.

As we look over our work in the Ladies Aid or American Lutheran Church Women, as we are now called, we rejoice that we can and do learn much from our monthly Bible stories, from singing hymns of praise to our Lord and Saviour, and by our prayers.

The Ladies Aid or ALCW has contributed generously to local relief agencies sponsored by our church: Lutheran World Action; funds for building new churches in crowded areas; clothing drives; Seaman's Mission; Ephphatha; Oak Grove high school; Camp of the Cross; Youth Services and to

the Crippled Children's School. We have given help to missionaries from our area. We provide the Scope magazine to all ladies of the church, including the girls attending college, so all have an opportunity to follow up with the Bible studies it contains. We also encourage our young members to attend Bible camp by paying a part of their camp fees.

May our ALCW be drawn closer to do the work of our Lord and Saviour as we study and work for the extension of His kingdom on earth and may we grow and nurture in fellowship with Christ and with one another.



HEDAHL'S
INC.
AUTOMOTIVE
CENTER

100 E. BROADWAY
BOX 1038
BISMARCK, NORTH DAKOTA 58502

Franchised: Bismarck, Dickinson, Glen Ullin
and Hettinger

Stores at:
Linton, Mandan, Jamestown, North Dakota
Glendive, Sidney, Montana
Aberdeen, Britton, South Dakota

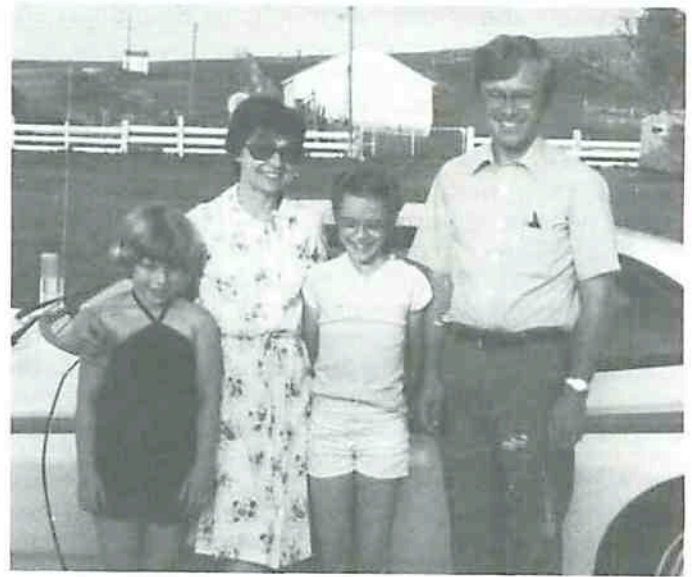


Sims Cemetery

PASTORS OF SIMS-ALMONT LUTHERAN PARISH SINCE 1953



Pastor and Mrs. Jolivette and family - 1953-1956
Jean, Alice Ruth, Thomas, Bruce, Mark, Norbert



Pastor and Mrs. Doug Brandt, Tonja and Elisa - 1971-1975



Pastor and Mrs. O.L. Olsrud - 1957-1967



Pastor and Mrs. John H. Leitell, Ann and Mary - 1975-present

GLEN ULLIN DRUG

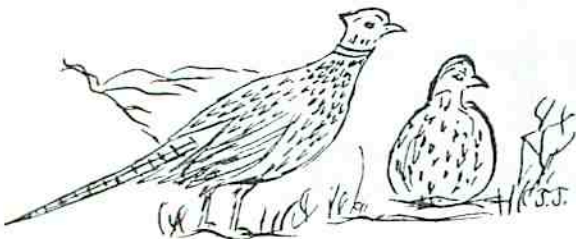
Let Us Fill Your Next Prescription

- Drugs •Veterinary Supplies •First Aid Supplies • Gifts
- Photographic Equipment & Supplies •Greeting Cards
- Cosmetics •Home Needs •Art Supplies •Baby Needs

Open 8:30 to 12 Noon — 1:00 P.M. to 5:30 P.M.
Open till 4:30 Saturday

Call 348-3303

For After Hrs. Emergency Call 348-3312 - Mandan 663-5218
113 S. MAIN GLEN ULLIN



ALMONT UNITED LUTHERAN CHURCH

by Edith Skjolsvik

During the first years in Almont, Lutherans worshipped with other Christians in the community. As time passed they felt a strong desire to organize their own place of worship. On Dec. 17, 1915, a group of interested citizens held a meeting in the director's room of the bank. The cash sum of over \$500 was paid in at that time and a building was assured for the next summer.

The Ladies Aid and a girls' Willing Workers Club were organized. As a result of the untiring efforts of Mr. O.C. Ellingson and Mr. E.E. Templeton, the United Lutheran Church was organized.

In 1916 Pastor L.K. Dordal, then serving at Sims, was called to serve the Almont congregation also. The town hall was used for worship until a church building could be acquired. This was accomplished by the purchase of the old Almont school when it was offered for sale in the fall of 1917. It was moved to its present location and remodeled into a comfortable and adequate place of worship.

Records previous to 1924 have been lost, but it is believed that O.C. Ellingson, E.E. Templeton, C.A. Knutson, O.K. Overgard, Jens Nelson, Jonathan Peterson, Mrs. Otis Malone, Mr. and Mrs. T.A. Barstad and Mr. and Mrs. J.R. Sherwood were among those present at the first meeting.

Some of the previous records misplaced have been found and might be of interest to some and will be copied as they were written.

December 1, 1916

There is a move on foot to build a new Lutheran Church in Almont this coming spring, and with that purpose in view a meeting of local people was held in Almont, Monday. At the meeting they were not able to agree on the location, so another meeting was called for two weeks from the date of the first meeting. The money for the erection of the building has easily been signed up and a committee appointed to look up the cost of a building and arrangements for a building. There are a large number of people in Almont who are not served at present by any church and they are anxious to push forward towards building.

Reverend Dordal of Sims has been holding religious services and people of Almont are well pleased with him and feel that now is the time to realize their long pent up desire for a church. With the able assistance of Rev. Dordal they should have no trouble.

December 2, 1916

The sale, supper and program given by the Almont Ladies Aid last Saturday evening in the Merchants Hotel was very well attended. The amount realized was \$80.00, which will go toward the building of a Lutheran church.

Saturday evening, December 9, 1916

The girls of the Willing Workers Club will give a program and basket social in either the hall or school house. A few articles of fancy work will also be sold. The Willing Workers Club was organized October 3, 1916 at the O.C. Ellingson home. Officers elected were President, Beatrice Williams; Vice-President, Clara Anderson; Sec'y and Treas., Ermine

Lauzon.

A subscription list has been passed for the purchase of a Christmas tree and the young people of the community will prepare a program for the evening.

[The school house was purchased in the fall of 1917 and moved to its present location (now the Wallace Timpe house across the street from the Ragna Knutson residence).]



DEDICATION SHOWED FINE SPIRIT.

July 25, 1919

Almont was host and hostess to a veritable multitude of people at their church dedication. Host and hostess, we say, because they not only gave us the carefully planned church services they had promised, but they fed us as well with such choice hot dinner of chicken, baked beans, scalloped potatoes and all cake, coffee and delicacies of an ordinary luncheon besides.

The dinner must have been as a special dedication of their fine new basement and as such it forms a fine precedent for future social gatherings. Such hospitality and care for the well-being of others surely betokens a practical Christianity, and from the fact their untiring labor was expended without any hope of reward in that the sumptuous dinner was furnished gratis, we feel the more deeply indebted to them for showing us that for once the church was not working for money, the reflection so often cast upon any organization.

The congregation which celebrated the dedication of their handsome little building Sunday is of the United Lutheran denomination and was first organized on June 24th 1915 by Rev. Larson of Taylor. Subscriptions toward a building fund were begun then and continued to grow until it was large enough to enable them in the fall of 1917, when the old school house was for sale, to purchase it and move it to its present location and set it on the full sized basement they had constructed for it. The basement had been used for services on society gatherings these past two years and helped very materially toward the further growth of the real church building for their Aid Society of which Mrs. Shurr is president. Mrs. Nelson, vice president, has raised sufficient funds to furnish the new church

and they did it handsomely, and the girls' Willing Workers Club raised a piano fund of \$200.00 which was used to get the little church organ instead, because there was an urgent need for an instrument. The Willing Workers also bought a bell for the belfry which now stands on the church grounds.

The present building is about 24 x 50, will seat comfortably 100 people and is really a structure to be proud of. Their congregation has 30 active member families. So far the present need is fully supplied. Not all attempted to enter the church Sunday. An able choir led the singing Sunday morning, but it was congregational notwithstanding, for everyone sang in a wholehearted way that was truly inspirational. Rev. Dordal of Rhame, ND, has been expected to preach the dedicatory sermon and his inability to be present was a sad disappointment indeed, for he is an old friend of all the congregation as well as former pastor. Rev. Larson of Taylor and Rev. Halvorson of Sims had also been expected, but could not, so Rev. Ulrich, New Salem, formed himself into the position of substitute for all three. His dedicatory sermon proved, however, he was well able to meet the occasion and also prepared for a second sermon at 3 o'clock in the afternoon. In the evening they had song services and musical programs and several members of the choir of the New Salem congregation took part.

So with the dedication of the handsome little church much has been accomplished for there have been many difficulties to overcome and some yet in sight, but it is the hope and expectation that there will be a steady growth and plans are being made accordingly. May peace and prosperity attend them.

After Rev. Dordal left Almont the ministers serving here were Pastors Halvorson, Munson, Foss, C.G. Nelson, R. Haakonson, C. Brecto, C.J. Fylling, Norbert Jolivette, L. Anderson, Douglas Brandt and our present pastor, J. Leitel.



DEDICATION SERVICE - October 9, 1956
Pastors taking part in church dedication service - L to R Carsten Brien, Magnus Lutness, Norbert Jolivette, C.G. Nelson, Dr. Loyal Tallakson, pres., N.D. District, Harold Hoftad and Dr. C.J. Fylling.

Improvements of the building furnishings and yard beautification are constantly being made through gifts and memorials. Some of these are a large lighted cross, sanctuary flood lights, lectern, office desk and chair, brass cross and candlesticks, silver coffee service, furniture for fellowship hall, music stand and file, library books, offering plates, two altar chairs, lectern communion set, Bible, two flags, eternal light and candles, pictures, carrion tape bell system, candelabra, communion card holders, altar cloths, mirror, rug, hymnals, outdoor planters, evergreen trees, banners, bulletin boards, clock, outside glass doors, drapes, organ and piano, cabinets for Sunday School and Mission Circle materials, and a lighted bulletin board in the right hand corner of front church yard. And there is cash, which will be used for whatever need arises.



On Pentecost Sunday in 1955 the congregation voted to erect a new building. Mr. E.W. Hyde, founder of Almont, donated the lots on which the building is located. The Finance committee, Building committee and Building Fund Treasurer got busy and a dream became a reality on Sept. 9, 1956, when dedication services were held in the present building. Rev. N.L. Jolivette was the pastor and Dr. L.E. Tallakson, North Dakota District President, delivered the dedication address.



ADULT CONFIRMATION CLASS - 1937
L to R - front: Kathleen Fallgren, Regina Anderson, Ann Weibke, Pastor Haakonson, Huldah Olson, Hazel Hoovestol, Lillian Monson. Middle: Ruth Feland, Grace Anderson, Leatha Anderson, Frances Kilen, Edith Allen, Mrs. Oscar Pearson. Back: Willie Westerman, Ernest Monson, LeRoy Olson, Burton Nelson, Ed Bond, Gayle Monson, Steve Weibke, Arnold Barstad.



Basement of new church - 1957.

Back: Edith, Edgar Skjolsvik, Lillian, Roman Peterson, Clarence Jacobson. In pew: Carol Atkinson, Linda; Philip Johnson, Leon Olson (standing).

Available records show approximate statistics: Baptisms 296, confirmations 335, weddings 80, funerals 131.

Many challenges have been presented during the past 75 years; there will be more to come and as each generation faces its responsibilities we ask guidance to carry on faithfully and well.



Lutheran Parish float

ALMONT LUTHERAN CHURCH WOMEN

The Almont Aid was organized in 1916 at the home of Mrs. Jens Nelson. The first officers were: Mrs. Gunvoldson, president; Mrs. Jens Nelson, vice president; and Mrs. O. Malone, secretary. Other early members included Mmes. Andrew Knutson, Nels Jacobson, Ben Bird, Ole Ellingson, Olaf Olson, George Ims, C.A. Knutson, N.E. Becklund, L.C. Nelson, G.H. Anderson, and Albert Aanstad.

Membership has changed from 24 in 1926 to 13 in 1936 and grew to 28 in 1956. All women of the church are now considered to be members.

The Aid joined the Women's Missionary Federation in 1934 and since then has studied and supported the mission, charity and education departments of our church synod. Some of the projects in-



SEWING CONFIRMATION ROBES - 1963

Irene Jacobson, Hazel Hoovestol, Ragna Barstad, Elvira Thiel and Grace Nelson.

cluded adopting an Indian girl by keeping her in clothing, making layettes for the House of Mercy, clothing drives for Lutheran World Action, and clothing and food sent to Ardella Reetz, missionary to Pakistan. Hosting the WMF Convention in 1948, honoring the seven oldest members with Life Membership pins in 1951, and starting a library in 1955 were important events.

In 1960 the names of this organization was changed to ALCW. Monthly Bible studies following the lessons as outlined in "Scope Magazine" given by members (with previous instruction from the pastor) has continued.



1978

Mrs. Ragna and Mrs. Grace Nelson honored at Mother-Daughter Tea for 62 years of service in the Women's organization of the Almont Lutheran Church.

Every May since 1957, a Mother-Daughter Tea has been held that now includes females of the whole community. Mothers and grandmothers take turns hosting the event. For many years we had a pot-luck dinner on Memorial Day with a free will offering.

Harvest Festival dinners, planned by the Social committee, are usually held in October. Thank offering boxes, blankets, clothing and soap have also been donated for Lutheran World Relief.

December meetings are a special Christmas program with the giving of gifts to Jamestown Hospital or Crippled Children's Home and packing of cheer boxes for community folks.

Encouraging young people to attend Bible Camp by helping defray expenses has been a yearly project as well as contributing to Elm Crest Manor in New Salem, Dakota Boys Ranch, Minot, and many other Christian organizations. We have helped sup-



MOTHER-DAUGHTER TEA - May 1958

Grandmothers - hostesses Grace Nelson, Edith Skjolsvik, Nettle Hansen, Hazel Hoovestol, Marguerite Olsrud, Anna Thorson, Lydia Schwemmer, Rosella Olson, Ellen Kilenand Ragna Barstad.



SIMS-ALMONT LUTHER LEAGUE

L to R - Front: Corby Schollmeyer, Colleen Reinhardt, Lynn Bond, Shari Keller, Sherry Ritz, Eric Olson, Laurie Hunter. Back: Todd Bethke, Tom Bond, Rev. John Leitell, Joel Larson, Mrs. John Leitell, Calvin Feland, Lester Feland, Lee Bond, Mrs. Lester Feland and Cindy Feland.

A Young People's Society, as it was then called, was organized at Almont Lutheran Church in 1926 by Rev. J. Thornell. The name was soon changed to the Luther League. Among its early activities were such projects as gathering funds to purchase a piano for the church, sending groups to Bible camp and studying Lutheran doctrine.

About 1938 the Luther League, which had previously included among its membership persons of various ages, became strictly a youth organization and remains so to this day. Activities over the next few decades included taking orders for the denominational magazine, sending delegates to the national Luther League convention on three occasions and mission support.

After being largely inactive for several years, the group was reorganized in February of 1979. Regular meetings have been held since that time, including such activities as bowling, swimming, cross-country skiing, Bible games, scavenger hunt, a speaker on alcohol and drug abuse and studying a book together. The members have also taken responsibility for conducting a Sunday morning worship service once a year.

Young people from both Almont and Sims belong to the group and the current officers are: Lisa Ritz, president; Cindy Feland, vice president; Laurie Hunter, secretary, and Shari Keller, treasurer.



Luther League group ready for an afternoon of skiing.



ALMONT ALCW - 1980

L to R - Front: Frances Kilen, Mrs. Don Shannon, Mrs. Roman Peterson, Mrs. Sig Peterson, Mrs. Art Feland, Pearl Olson. Middle: Edith Skjolsvik, Mrs. Lester Feland, Evelyn Mortenson, Mrs. Joel Olson, Mrs. Norman Hanson, Mrs. Leroy Reinhart, Mrs. Dick Bond, Mrs. Marvin Ritz. Back: Mrs. Sam Thiel, Mrs. John Leitell, Mrs. Eugene Thorson, Hazel Hoovestol, Carol Hoovestol, Mrs. Wm. Bethke, Mrs. Leroy Ritz and Irene Mortenson.

port the Sunday School, made church improvements, and take turns cleaning the church and keeping the church yard attractive.

Since 1973 we have honored and recognized our church members 75 and over with flowers and singing "Happy Birthday" at the close of the church service.

The Social committee has been in charge of serving for many weddings and anniversary receptions and funerals.

May we continue to serve and use our talents to further God's work, living in harmony, helping the needy and showing love and concern for our neighbors here and abroad. In this way we promote love for Christ and our fellowmen!



LUTHERAN MISSION CIRCLE



ORGANIZATION MEETING OF MISSION CIRCLE - 1956
 Front: Grace Nelson, Mrs. Art Feland holding Joan, Rosella Olson, Mrs. Andrew Kilen, Mrs. Jolivette. Back: Hazel Hoovestol (hid), Donna Johnson, Joyce Olson.
 Taken by Margie Peterson

The Lutheran Mission Circle was organized in February 1956 in the Almont Lutheran Church basement. The circle was organized with the help of our pastor's wife, Mrs. N.L. Jolivette.

Invitations were extended to every woman in the parish. Ten ladies were present at the first meeting. Mrs. Joel (Donna) Johnson was elected presiding officer and Mrs. Marvin (Joyce) Olson as treasurer. The meetings were held the last Friday afternoon of every month. The meeting included a short devotional period, a story or feature from some mission field, and the remainder of the time is spent sewing, tearing and rolling bandages and packing articles to be sent. A free-will offering is taken to be used for postage on the packages and other expenses. Light refreshments are served at the close of each meeting.

Some years later the meeting date was changed to the last Monday of the month. We make piece quilts, also some layettes, which are sent to the Mission field overseas. We also have made many health and school kits which we sent to the Mission for children there. We have sent money to the school at



ALMONT LUTHERAN MISSION CIRCLE - 1981
 L to R - Back: Mrs. Edith Skjolsvik, Mrs. Norman Hansen, Mrs. Beatrice Wanstrom, Mrs. Hazel Hoovestol; Front: Mrs. Ragna Knutson, Mrs. Lydia Schwemmer, Mrs. Frances Kilen, Mrs. Rudy Feland.



MISSION CIRCLE - 1959
 Joan Feland (girl); Sitting: Grace Nelson, Mrs. Kilen, Mrs. Olsrud, Hazel Hoovestol, Rosella Olson, Joyce Olson, Anna Thorson; Standing: Margie Peterson, Ragna Barstad, Leatha Anderson

Grafton, the Orient, Boys Ranch at Minot, and student seminary; also material for Sunday School.

We send cards, have given plants or gifts to our members when they are hospitalized, and have given quilts to the needy in the community. We also gave \$60 for built-in cabinets in the basement, which house both Mission Circle and Sunday School material. We also purchased two sewing machines.

We have lost some of our members; some are deceased and some have moved away, but we still enjoy our work.

NEW SALEM FARM SERVICE



WAYNE WERCHAU

JEROME WOLFF

102 N. 5th Street
 New Salem, ND 58563
 Phone: 843-7557

ALMONT LUTHERAN SUNDAY SCHOOL



Almont Sunday School in October 1955

The Almont Lutheran Sunday School was organized in 1926 by Pastor Thornell; Mrs. J. Pederson was the first superintendent. In a short time it grew to 90 members, which included a Bible class taught by the pastor.

Along with Sunday School, each summer during the month of June, Bible School is also held. This includes children from several churches in the locality. The Sunday School presents a Christmas program, usually the Sunday before Christmas each year. In years past the Sunday School has helped in the support of Miss Ardella Reetz, a missionary in Pakistan.

The Almont Lutheran Sunday School celebrated their 25th anniversary in 1951 by honoring two faithful workers, Mrs. N.E. Becklund and Mrs. Grace Nelson, who had worked for many years in the Sunday School.

The membership has fluctuated according to the population in the community and in many cases the Sunday School is the child's first introduction to church and its related work.

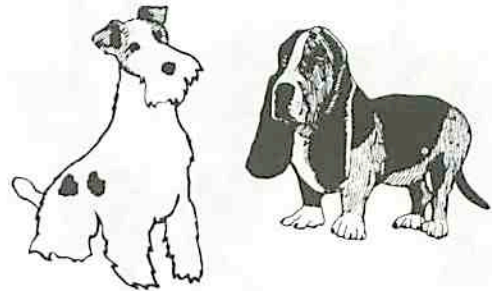
Those serving as superintendent of the Almont Lutheran Sunday School through the years are: Mrs. J. Pederson, Mrs. C.G. Nelson, Mrs. Grace Nelson, Miss Caroline Frey, Mrs. N.E. Becklund, Reynold Olson, Mrs. Vernon Knutson, Mrs. Ragna Knutson, Mrs. Sig Peterson, Mrs. Lillian Peterson, Mrs. Nathalie Thorson, Mrs. Eunice Bond and Mrs. Marshall Feland.



Mrs. Nelson and Mrs. Becklund honored for 25 years of service in Sunday School with missionaries Ardella and Laura Reetz. L to R: Grace Nelson, Ardella Reetz, Beatrice Becklund, Laura (Reetz) Ericksen.

MIDWAY VETERINARY CLINIC

"On the Strip"



Box 911 • Bismarck, ND

4120 Memorial Hwy. • Mandan, ND

Phone: 663-9841



Lutheran Sunday School - 1956



ALMONT LUTHERAN CHURCH SUNDAY SCHOOL - 1981

L to R - Front: Jenny Olson, Mary Leitel, Russell Hoovestol, Jennifer Kilen, Mark Feland, Dale Peterson, Scott Hoovestol. 2nd row: Lana Bahm, Ann Leitel, Angie Sailer, Sue Feland, Janelle Kilen, Cathy Feland, John Reinhardt, Kim Hoovestol. 3rd row: Robyn Peterson, Clinton Feland, Kay Hoovestol, Kim Sailer, Mischelle Sailer, Peggy Berry, Mrs. Eugene Peterson. Back: Mrs. Leroy Reinhardt, Sherry Ritz, Colleen Reinhardt, Mrs. Marshall Feland, Mrs. Warren Hoovestol, Mrs. Marvin Ritz, Mrs. Lester Feland and Mrs. Joel Olson.



STORM WINDOW &
SCREEN REPAIR
SERVICE
PROMPT INSURANCE
CLAIM SERVICE
PICKUP & DELIVERY
SERVICE

GLASS SPECIALISTS
**JAKE'S
AUTO
GLASS, INC.**

JIM LAHMAN, PRES.
ROUTE 1 BOX 30-D
3202 MEMORIAL HIGHWAY
MANDAN - BUS 10

DIAL **663-9333**

LUTHERAN CHOIRS

Shortly after the congregation was organized in 1916, Mrs. H. Gunvoldson started a choir and also promoted both vocal and instrumental music in the church. One of the first programs the choir presented also included vocal solos, a violin solo and a piano duet.

The Almont church has always had a choir and if there haven't been enough adults willing to sing, a Junior Choir or Youth Choir has provided music at the worship services.

Mrs. N.E. Becklund was the church pianist and choir director for more than 30 years and during that time the choir presented several cantatas and small choral groups were organized. Mr. Kling and Mr. Lee each directed the choir for a short time and Sig Peterson was director for awhile in the 40's. Mrs. Bob Atkinson was pianist and choir director for several years and during that time had a combined Sims-Almont Choir of 25 voices. This choir alternated singing at the two churches for the worship services and presented several cantatas and concerts. The choir members met in the homes for practice every week and had skating parties and other social times. For many years Vernon Knutson was a favorite soloist.

The men's quartet, organized in 1927, provided music for church, funerals and special occasions for many years. In the 60's more male voices were added to make an octet and later it became a men's

chorus which continued until a few years ago. The first members of the quartet were: Chris Halvorson, Sig Peterson, Myron Knutson and Leon Jacobson. The accompanists were Valborg Fisher, Aalga Halvorson, Ruth Pederson and Marjorie Nelson, who continued until it dissolved. Special programs included a half-hour program on Channel 12-TV and also several concerts in other communities.

Harold Foley directed the choir for several years including three cantatas. Mrs. Doug Brandt directed for three years including two cantatas with a Sims-Almont combined choir. Mrs. John Leitel was choir director for two years and since 1976 has directed the Junior Choir, now called the Youth Choir. This choral group has presented four concerts. Marge Peterson is the accompanist. Marge Peterson organized a Junior Choir in 1958 which grew to 22 members the following year and has continued every year since. Accompanists have been Mrs. Olsrud, Lynn Peterson and Paula Ritz. Every Christmas season since they first organized, they have caroled in the community (no matter what the weather). In 1963 a Youth Choir was organized with about 20 high school voices and directed by Sig Peterson.

Since 1955 Marge Peterson has been organist and responsible for music in the church. She has always appreciated the people who are willing to use their God-given talents to enrich the worship services. Our church has been blessed!



LUTHERAN CHURCH CHOIR - 1953-54
L to R - Front: Carol Atkinson, Janet Feland, Corma Feland, Mildred Olson, Donna Johnson, Dorothy Hoovestol, Beatrice Becklund. Middle: Arlene Michael, Laurel Harper, LaVonne Ritz, Charlotte Kilen, Lillian Peterson, Myrtle Hoovestol, Dorothy Harper, Grace Nelson, Pearl McDowell, Marge Peterson. Back: Gene Harper, Roman Peterson, Joel Johnson, Sig Peterson, Don McDowell. Mrs. Atkinson, director. Mrs. Becklund, accompanist.



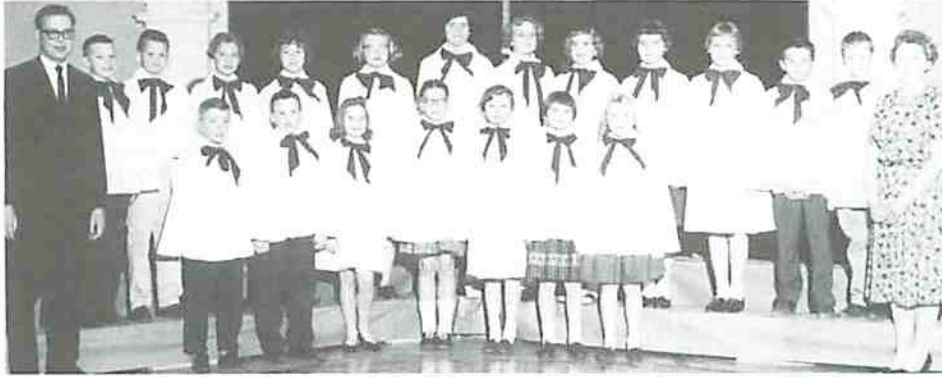
JUNIOR CHOIR - 1959
Back: Linda Smith, Sandra Christianson, Edith Smith, Harvey Hogan, Douglas Hanson, Stuart Olson. Middle: Candy Gustafson, Lynn Peterson, Pat Anderson, Carol Feland, Larry Smith, Charles Olson, Bruce Peterson. Front: Ginger Gustafson, Penny Anderson, Orletta Kilen, Peggy Thorson, Amy Kilen, Doreen Willman. Mrs. Sig Peterson, director.



CHOIR - 1960
Back: Sig Peterson, Mark Willman, Raymond Zemple, Donovan Thiel, Joel Johnson, Duane Johnson, Clarence Jacobson. Middle: Laura Gustafson, Mildred Olson, Lillian Peterson, Linda Jacobson, Norma Kilen, Marge Peterson, Lee Harper, Carlyle Reef. Front: Mrs. Olsrud, accompanist; Nancy Gustafson, Corma Feland, Marilyn Olson, Bonnie Gustafson, Judy Gustafson, Grace Nelson and Harold Foley, director.



LUTHERAN MEN'S CHORUS - 1961
Wayne Schwartz, Lee Harper, Harold Foley, Joel Johnson, Marge Peterson, Clarence Jacobson, Roman Peterson, Duane Johnson, Sig Peterson, Mark Willman.



LUTHERAN JUNIOR CHOIR - 1961
Back: Harold Foley, Bruce Peterson, Dale Olson, Penny Anderson, Candy Gustafson, Oretta Kilen, Edith Smith, Patty Feland, Lynn Peterson, Carol Feland, Pat Anderson, Larry Smith, Charles Olson, Mrs. Sig Peterson. Front: Arvin Kilen, Randy Christianson, Doreen Willman, S. Maas, Peggy Thorson, Sharon Thorson, Amy Kilen.



JUNIOR CHOIR - 1970
Front: Monty Ritz, Phyllis Bond, Charles Willman, Ethel Kilen. Back: Corlys Willman, Jim Anderson, David Willman, Cheryl Bond, Paula Ritz; Marge Peterson, director.

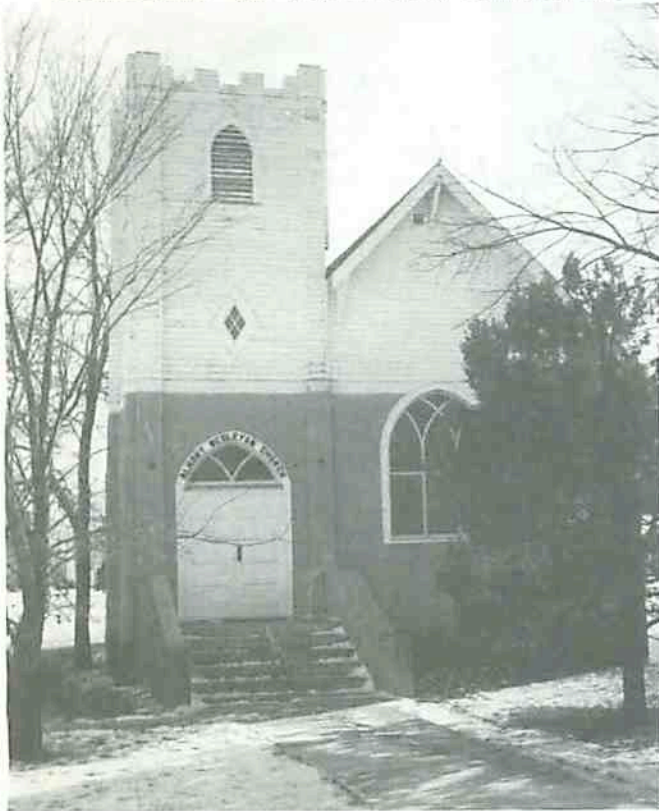
LUTHERAN CHOIR - 1979
Front: Jill Olson, Pat Feland, Connie Reinhardt, Lillian Peterson, Lavyrl Feland, Bonnie Harmeson, Eunice Bond, Carol Ritz. Back: Marge Peterson, Bill Bethke, Phil Harmeson, Joel Olson, Sig Peterson, Roman Peterson, Ruth Leitel.



YOUTH CHOIR - 1981
Back: Sherry Ritz, Shari Keller, Lynn Bond, Cindy Feland, Colleen Reinhardt, Lisa Ritz, Ruth Leitel, director. Front: Kim Sailer, Kay Hoovestol, Shelly Sailer, Robyn Peterson, Laurie Hunter, Marge Peterson, accompanist.



HISTORY OF ALMONT WESLEYAN CHURCH



The Wesleyan Methodist Church was organized in May 1924 by Rev. J. F. Simpson, President of Dakota Conference, with six charter members: Mrs. E. W. Hyde, Thelma Hyde, Wallace Hyde, Laurin Hyde, Edith Bird, and Stanley Lucas. Mrs. E. E. Templeton and Mrs. Anna Nyquist became members in May 1930; several more joined later that summer.

The church was served for a few years by itinerating pastors, Rev. A. M. Wiley of Jamestown, ND, serving most of the time until June 1928. Revival meetings were also conducted during these years by Rev. Wiley, A. J. Tiffany, Dick Wilson, and L. D. Harris. These services were held in the old hall on Main Street or the school. As the work grew it was felt that a resident pastor and church building were needed. Rev. L. D. Harris was appointed pastor in June 1928, and through his leadership and faithful labor, a house of worship was begun that fall. Rev. Harris was a church builder as well as pastor. He came here from Watford City where he had built a church and went to Ipswich, SD, in 1934 where he built another church. After retirement as pastor, he helped build churches in the Philippines, Haiti and Jamaica. In June 1962, he was presented with a Citation of Merit by the Dakota District in appreciation for fifty years of devoted service. He went to his reward in September 1978 at the age of 94.

Rev. Harris received much volunteer help in building the church. It was completed in 1930 and dedicated November 21, 1932. Rev. Rufus Reisdorph, president of Dakota Conference of the Wesleyan Methodist Church delivered the dedicatory address to a large audience.

Its membership has never been large but its influence under God has been widespread. With its emphasis on missions, it helped establish a sister church in Bismarck and in the Philippine Islands. A number of her young people have been engaged in full time service spreading the gospel in various communities and on foreign soil.

The following ministers have pastored here:

Rev. L. D. Harris	1928-1934
Rev. Thomas Bailie.....	1934-1941
Rev. Marvin Jones	1941-
Geo. Gore	Jan. 1941-June 1942
Rev. A. M. Wiley	1942-1945
Rev. S. T. Lee	1945-1949
Rev. A. J. House	1949-1950
Rev. E. V. Sollie.....	1950-1955
Rev. Robert McCoy.....	1955-1957
Rev. Lester Myers.....	1957-1964

Rev. Willard Stone pastored the Almont and Bismarck churches 1964-1966. They resided in Bismarck.

Rev. Ernest Hobbie..... 1966-1972

A Minister was not available in 1972, so Rev. Don Klingensmith of Mandan was asked to serve as pastor, which he did until July 1977. For two years the church was without a pastor but continued to hold services. Ron Groninger, who had quite recently moved into the community and was attending the Wesleyan church, later becoming a member, was asked by the church constituency to assume leadership of church services which he ably did. He was interested in the moral and spiritual welfare of the children and youth of the community, so with the support and assistance of other church people, he organized the Christian Youth Crusade (CYC) for all children and youth through the sixth grade.

Clyde Graham, who had recently graduated from the Bartlesville Wesleyan College in Bartlesville, Oklahoma, with a Bachelor of Arts degree in Theology, was called in June 1979 to pastor the church here and is the present pastor. Mrs. Graham, who has a Bachelor of Arts degree in sacred music from Bartlesville Wesleyan College has charge of church music and also directs the school music program. She gives piano and guitar lessons and shares her abilities in some community programs.



Rev. and Mrs. Clyde Graham and Jamie, pastor of Wesleyan Church, Almont, ND - 1980.



JUNIOR SUNDAY SCHOOL CLASS - WESLEYAN CHURCH

Lyle Peterson, teacher; Danny Schwemer and David Stolberg. Primary Class: Mrs. Graham, teacher; Jamie, John and Mabel Stolberg - 1980.

Almont's first Sunday School; interdenominational, was organized in April 1907 with Mrs. E. W. Hyde as superintendent. They met in the community hall or the school. For a number of years the Almont Bible School, as it was called, was the only Sunday School and the only regular religious service in the community. A Lutheran Sunday School was organized in 1926. The Bible School continued to meet in the school until the Wesleyan Methodist Church was completed in 1930, when it became an auxiliary of the church organization. Mrs. Hyde served as superintendent until her death in December 1949. Ingeborg Trovik was elected superintendent and served in this capacity for several years. Ron Groninger was elected superintendent in 1978 and served until



YOUTH GROUP WESLEYAN CHURCH

Back row: Kristi Peterson, Vera Stolberg, Terry Bumann, Ricky Peterson. Front: Arlin Bumann, Lynnae Peterson, Shelly Schwemer, Laurie Schwemer.



ADULT SUNDAY SCHOOL CLASS

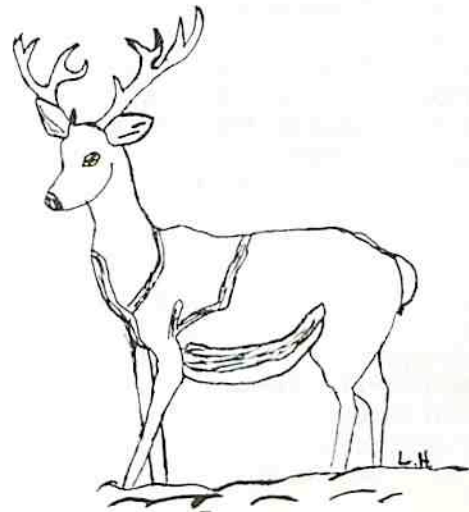
Back row, left to right: Mrs. Lyle Peterson, Rev. Graham, Mrs. Eugene Stolberg, Eugene Stolberg. Front: Ingeborg Travik, Alma Olson, she teaches Teen Class, Mrs. D. Norton, Dallas Norton, Mrs. Henry Bumann. Missing: Mrs. Everett Miller, Ida Olson, Mrs. Darrel Nilles, Marville and Lois Schwemer - 1980.

August 1980 when he and his family went to Minnesota for a year, where he is attending St. Paul Bible College. Mr. and Mrs. Eugene Stolberg and family, who moved here from Anorage, Alaska in 1977, have taken an active part in the church. He was elected Sunday School Superintendent when Ron left and also teaches the adult class. Other teachers are: Teens, Alma Olson; Juniors, Lyle Peterson; Primaries, Mrs. Graham. Mrs. Stolberg directs CYC.



**"People
Helping
People"**

FIRST FEDERAL
SAVINGS and LOAN ASSOCIATION
Bismarck: Downtown - Kirkwood Plaza - Gateway
Mandan - Dickinson - Killdeer



WESLEYAN WOMEN'S MISSIONARY SOCIETY



WESLEYAN MISSIONARY SOCIETY

Left to right: Mrs. Everett Miller, Alma Olson, Mrs. Ingeborg Trovik, Mrs. Clyde Graham.



WOMEN'S MISSIONARY SOCIETY

Left to right: Alma Olson, Marian Nilles, Glenda Graham, Delores Stolberg, Karen Peterson, Alice Bumann and Ingeborg Trovik. Missing: Ida Olson, Karen Groninger, Violet Miller, Mrs. M. Schwemer - 1980.

The women's Missionary society of the Wesleyan church was organized July 28, 1938, at the Warren Rickett home with the following charter members: Mrs. Thomas Bailie, pastor's wife; Mrs. Martin Peterson, Mrs. Warren Rickett, Mrs. August Olin, Mrs. F. L. Trovik, Miss Thelma Peterson, and Miss Marjorie Olin. Several missionary meetings had been held prior to the organization date. Of these charter members only Mrs. Trovik still resides here and holds membership in the society.

At this initial meeting Marjorie Olin was elected president; Mrs. Bailie, vice-president; Thelma Peterson, secretary and treasurer. It was decided at this business session to hold two meetings each month, one being devoted to a Scripture lesson, prayer and reports from the various mission fields. The other meeting, known as a work meeting, after a short devotional session, was spent sewing new garments, making bandages, repairing used clothing or making quilts for foreign and home

mission fields. They were then, and continue to be, held in the homes of the members.

Prayer is stressed as a vital factor in the missionary program, consequently in 1940 the society voted to join the All Day Prayer chain sponsored by the Women's Missionary Society of the denomination. Our society was assigned the second day of each month as a day of prayer and fasting. Each member was asked to choose a different hour so if possible there would be a continuous chain of prayer throughout the day. This program as such has been discontinued, but a fairly new program has been instituted; Women's Prayer Fellowship: each member chooses a missionary or couple serving on the mission field, who they pray for and correspond with, if possible. Prayer requests for each day of the month are also listed in the (Wesleyan World) the society's periodical, besides up to date news from the many mission fields supported by the denomination. The denomination in cooperation with the Missionary Society has made great strides in updating and expanding its missionary program.

A missionary reading course was introduced in 1948. A maximum of six books and a minimum of four, plus a study book were to be read each year. Certificates were issued at the end of each quadrennium to the individual who had read the required number of books. The reading program is still in operation with a few changes. The books to be read are selected at the Society's headquarters in Marion, Ind. The required reading is now four missionary and one devotional book. Certificates are still issued.

A delegate is elected each year to attend the district convention where they become acquainted with fellow members across the district. Missionaries on furlough are guest speakers and share their experiences and present the needs and progress of the work.

WESLEYAN YOUTH ORGANIZATION

A Wesleyan Methodist youth convention was held in the schoolhouse in August of 1929. During this convention the remaining amount in pledges was secured for beginning the erection of the Almont Wesleyan Methodist church. The next day a short sod-breaking service was held on the corner of Margaret Street and Burt Avenue where the church was to be erected.

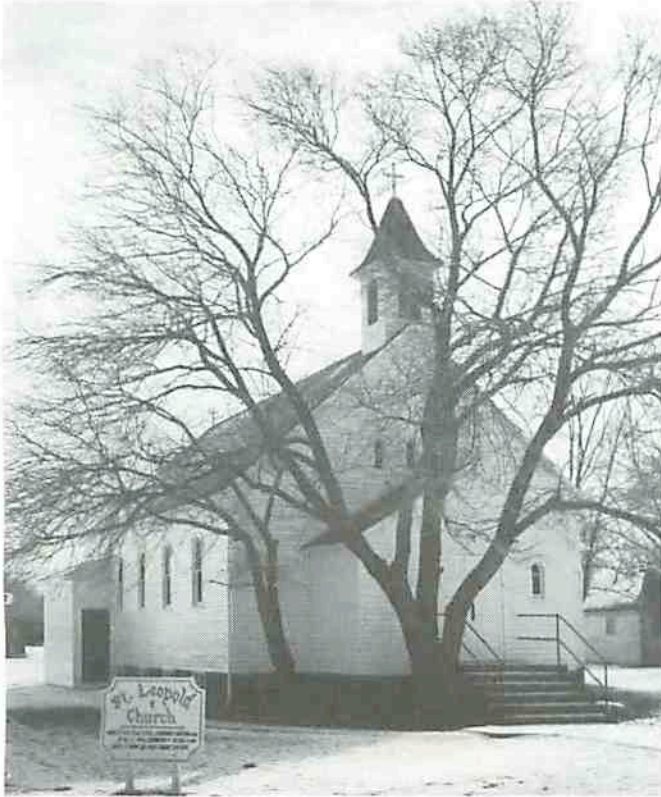
The Northwestern Youth convention was held in the new church a few years later. We had a large group of youth and there were many here from the Watford City and Johnson Corners churches. The convention lasted for three or four days. The noon and evening meals were served in the auditorium of the school.

The purpose of the Youth Society has been and still is to help young people walk in the Christian faith with fervency and zeal. Several of our youth have served the Lord in various capacities including the foreign mission field.

A new Wesleyan Youth (WY) Society was organized in May 1980 with Ron and Karen Groninger as leaders. It is now under the supervision of Rev. and Mrs. Graham.

SAINT LEOPOLDS CATHOLIC CHURCH

Almont, ND
by Regina Nilles



It took a lot of hard work and sacrificing by the few dedicated Catholic families to establish the St. Leopold's Catholic Church in Almont.

In the early 1900's, the people that lived on homesteads southwest of Almont were not all German speaking, and the nearest Catholic church was St. Joseph's Catholic Church, located about 13 miles southwest of Almont (which is still operating as a mission of Glen Ullin). It then was an entirely German speaking parish. After attending Mass there, off and on, the Theodore Stiler, Fred Spath, and Herman Timpe families asked the priest, Father Vincent Wigit of St. Joseph's, if he would consider having Mass in the home of Herman Timpe. They would furnish transportation and took turns taking him back and forth on the Sundays that he could allow for this service.

Mrs. Timpe fixed a dresser for the altar, and the men laid planks across nail kegs for seating purposes.

This didn't last long, as Father Vincent wasn't so young, and found he had all he could do to serve the people of St. Joseph's parish.

In the early 1920's these families got together and started to raise funds for a future Catholic Church in Almont. The first public dinner was held at the Herman Timpe farm, and with the help of several outsiders including non-Catholics, it was a great success. They decided to have more of these fund-raising dinners. The Joe Drashils decided to have one at their place, which was also a great success. The crowds became too large to serve at the farm homes, so they decided to have them in the Almont City Hall. Everything

from food to water had to be carried from home to the hall.

After things started to take place in Almont, we gained more dedicated families. In January 1917, Peter Pfaffs arranged to have his Excellency Bishop Vincent Wehrle come to Almont and celebrate Mass for the people. It was held in the Almont City Hall. An altar was constructed and His Excellency brought an altar stone, which is still used in the present church. It was then that Bishop Wehrle realized the families needed a church and pastor to carry on their faith, so he arranged for a priest to come from the Abbey in Richardton several times a year to have Mass in the City Hall. The first priests that came were Father Justus, O.S.B. and Father Felix, O.S.B.

After the Almont school was completed, Rickart Olson, a member of the school board, was successful in obtaining the use of one of the classrooms for Catholic services. It was used until the basement of the present church was completed. From 1928 to 1948 Father Bernard Fritz, O.S.B. faithfully served as regular pastor.

In 1935 St. Leopold's had its largest Confirmation class. It was a group of 26 children and several adults. Father Bernard instructed the children with the help of Mrs. Pfaff, Mary Timpe, Georgia Stoeckel, Mrs. Halvorson and other volunteers.

In 1936 there were 25 families that were members of St. Leopold's Catholic Church, so Bishop Wehrle ordered that a church be built. Father Bernard, with the help of the trustees - Leo Timpe, L. Stoeckel, John Erhardt, Chris Halvorson and Pete Pfaff, drew up the plans for the new church. Mr. E.W. Hyde donated the lots for the church; the Extension Society donated \$1500, and with that and the sacrifice of the people, the construction of the church was started in the spring of 1936, under the supervision of Joe Pfaff. Val Kary and Joe Filibeck moved the first scraper of dirt from the basement.

In 1948, a few years after St. Pius of New Salem became a parish with a resident pastor, Almont became a mission of St. Pius Church in New Salem. Father Marcus Haeg was pastor and provided weekly Mass and on all Holy Days of Obligation. It was during this time that the interior of the church was finished, except the tiling of the floor. This has been done. The altar in the church was obtained from St. Joseph's Church, Glen Ullin, and the other furnishings were either donated or purchased by the Ladies Aid, which is now St. Anne's Christian Women's Society. Many furnishings were given in memory of a loved one. A few of the items are: the statute of the Blessed Mother by Lucy Miller, now Mrs. Leonard Rebenitch, a former Almont teacher; the electric organ from Mrs. Art Feland, in memory of her father, Tim Cronin; and more from members and those outside of the church that are too many to mention, but to whom we are all thankful.

St. Leopold's very proudly boasts of having given one of its sons to the priesthood of the church, who is Rev. Father Wilbert Staudenmaier, now stationed in Appleton, WI, and one daughter to the sisterhood, Sister M. Simon, O.P., formerly Agnes Staudenmaier, now in retirement in Grand Rapids, MI.

In 1960 St. Leopold's became a mission of St.

ST. LEOPOLD'S CHURCH MEMBERS

L to R - Front: Mrs. Leo Timpe, Mrs. Ed Jacobson, Mrs. Val Kary, Mrs. Edward Thiel, Mrs. Clarence Nilles, Pearl Tavis. Back: Leo Timpe, Alex Staabb, Val Kary, Edward Thiel, Clarence Nilles, Ernest Vanilla.



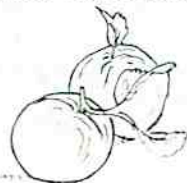
CATHOLIC YOUTH CHOIR

First row: Ann Greff, James Greff, Annette Bachler, Julie Renner, Patricia Doll. Middle row: Ann Schneider, Colleen Schneider, Mary Greff, Patricia Schneider, Theresa Doll, Kasper N. Greff, director. Back row: Darrel Jacobson, Otty Schneider, Teresa Greff, Kelly Thiel, Paula Doll.

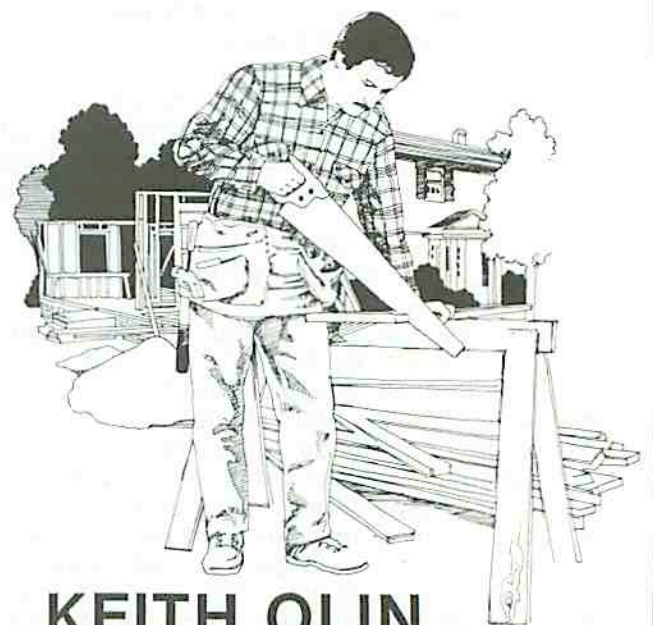
Josephs. It was while Father Clement Mengelkock, O.S.B. was serving both parishes, that they both became missions of the Sacred Heart Church in Glen Ullin. At the present time, Rev. Father Cyprian Meier is our parish pastor and Rev. Father Riley is our mission priest. Val Kary and Ed Thiel are the trustees.

The first child baptized in our parish, as found on records, was Ethel Stoeckel on May 13, 1917. The first Holy Communion service held in the parish was in the spring of 1918. The first wedding was that of Regina Timpe and Clarence Nilles in St. Leopold's Catholic Church on June 7, 1937; the last wedding was Sherry Thiel and Tim LaMay on July 3, 1980. The last 25th wedding anniversary was Mr. and Mrs. William Doll, October 17, 1980. The first funeral in St. Leopold's was Mrs. Herman (Catherine) Timpe, October 21, 1939; the last funeral was Mrs. Gertrude Hoffman 1980.

For the last several years the children received their religious training during school release time. The C.C.D. teachers are Mrs. Pearl Tavis, Mrs. Ed Jacobson, Mrs. Linda Kalvoda and Mrs. Betty Greff.



Carpenter • Cabinet Maker



KEITH OLIN

Phone: 622-3689

Leith, ND